



Delo Protection for Stationary Engines

DIESEL FUELED ENGINE



Diesel Fueled Stationary Engine

- Delo 400 XSP SAE 5W-40
- Delo 400 XLE SAE 15W-40
- Delo 400 SDE SAE 15W-40

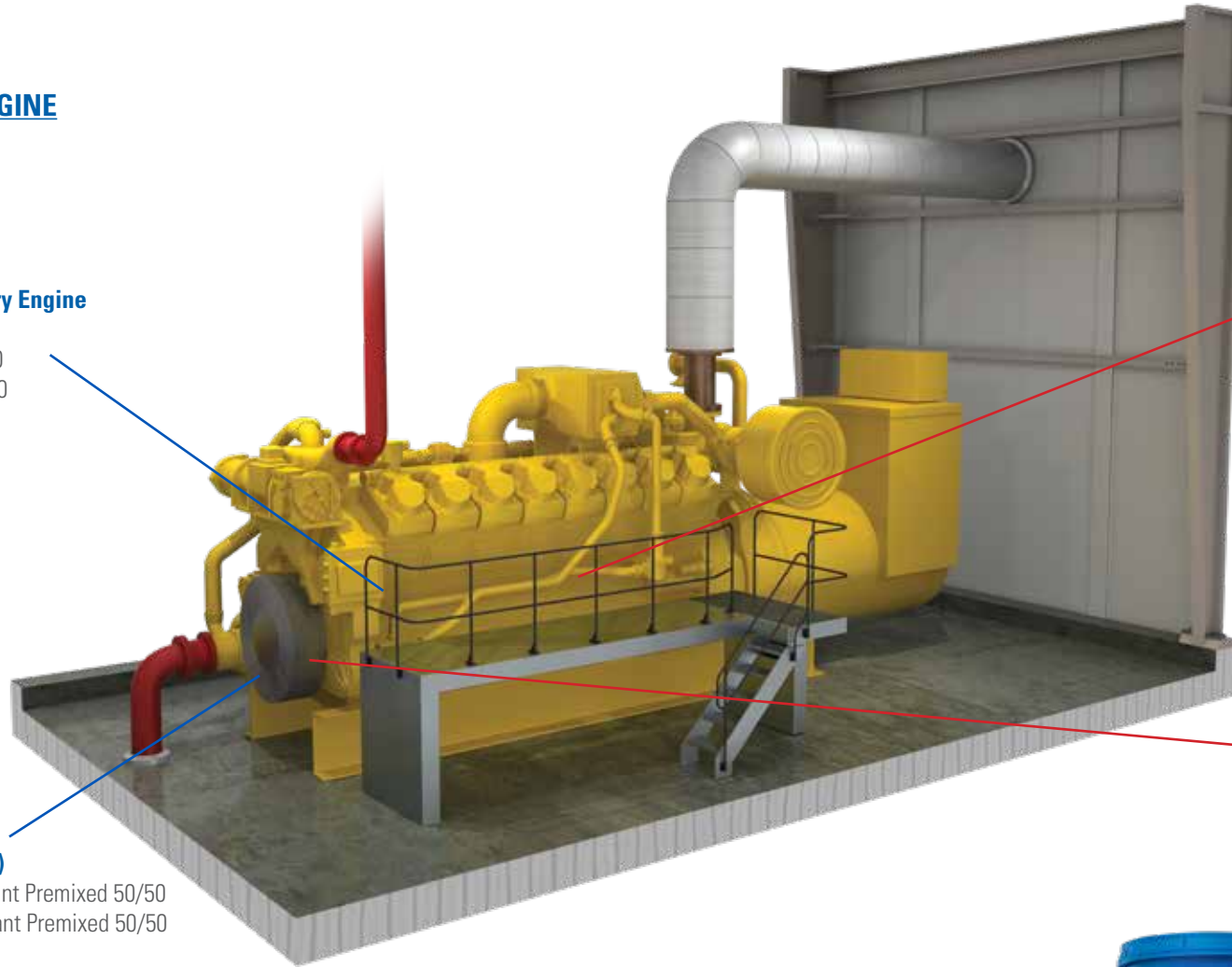


Coolant System (Diesel)

- Delo ELC Antifreeze/Coolant Premixed 50/50
- Delo XLC Antifreeze/Coolant Premixed 50/50

Available as ISOCLEAN® Certified

The product recommendations provide general guidelines for use in stationary engines. All manufacturers have different coolant and lubricant requirements and recommendations. It will be important to contact a Chevron representative or refer to the Original Equipment Manufacturer manual to confirm the proper product is used for the application. Visit chevron-gsc.force.com/lubeteksupport for confirmation of specific OEM specifications.



NATURAL GAS FUELED ENGINE



Natural Gas Fueled Stationary Engine

- HDAX® 9200 SAE 40
- HDAX 5200 SAE 40
- HDAX 3200 SAE 40



Coolant System (Natural Gas)

- HDAX ELC Premixed 40/60
- HDAX PF Premixed 50/50



Delo®

Let's go further.®

A Chevron company product

©2018 Chevron U.S.A. Inc. All rights reserved. All trademarks are property of Chevron Intellectual Property LLC or their respective owners.

DLBBPSTENSH_07-18